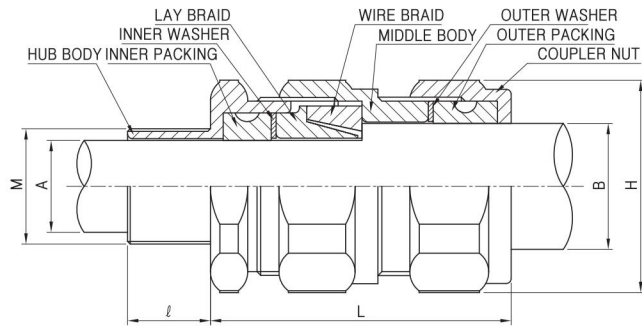


Braid Armoured Cable Gland

E1XF Braid Armoured Cable Gland

Type of Explosion-Proof
Flameproof (Ex d IIC)



Standard Materials

- Body : Brass or Stainless Steel
- Finish : Natural or Nickel plated

Cable Gland Ordering

- Gland Type /Size & Entry Thread Size

Application

- For use with braid armoured / Steel tape armoured cable.
- Double compression for outer/inner jacket of cable.
- Inspectable armoured clamping cable gland.

Compliance & Certification

- Notification of Ministry of Labor No. 2010-36
- Certified by KOSHA
(Korea Occupational Safety & Health Agency)

Catalog No.	Entry Thread Size(M)		Cable Dia		Thread Length(L)		Entry Hole Size		Braid Size	Hexagon Dimensions (H)	Weight (g)	Length (L)
	Metric	NPT	Inner 'A'	Outer 'B'	Metric	NPT	Metric	NPT				
SEBP-E1XF-16a	M16/M20	1/2"	5 ~ 11	8 ~ 13	15	15	17	22	0.05/0.8	H25× 27	150	67
SEBP-E1XF-16b	M16/M20	1/2"	5 ~ 11	12 ~ 15.1	15	15	17	22	0.05/0.8	H25× 27	150	67
SEBP-E1XF-20a	M20	1/2" or 3/4	8 ~ 15.1	13 ~ 17.5	15	15 or 16	21	22	0.05/0.8	H31× 33	235	74
SEBP-E1XF-20b	M20	1/2" or 3/4	8 ~ 15.1	16 ~ 19.5	15	15 or 16	21	22	0.05/0.8	H31× 33	235	74
SEBP-E1XF-25a	M25	3/4" or 1	13 ~ 19.5	17.5 ~ 22	15	16 or 18	28	26	0.05/0.8	H36× 39	290	79
SEBP-E1XF-25b	M25	3/4" or 1	13 ~ 19.5	21 ~ 26	15	16 or 18	28	26	0.05/0.8	H36× 39	290	79
SEBP-E1XF-32a	M32	1" or 1-1/4"	17.5 ~ 26	22 ~ 28	15	18 or 19	33	34	0.05/1.2	H45× 49	490	86
SEBP-E1XF-32b	M32	1" or 1-1/4"	17.5 ~ 26	27 ~ 32	15	18 or 19	33	34	0.05/1.2	H45× 49	490	86
SEBP-E1XF-40a	M40	1-1/4" or 1-1/2"	22 ~ 32	30 ~ 35	15	19 or 21	41	43	0.05/1.2	H55× 59	850	94
SEBP-E1XF-40b	M40	1-1/4" or 1-1/2"	22 ~ 32	35.1 ~ 40	15	19 or 21	41	43	0.05/1.2	H55× 59	850	94
SEBP-E1XF-50a	M50	1-1/2" or 2"	30 ~ 41.5	38 ~ 45	15	21 or 24	51	50	0.05/1.2	H68× 73	1390	100
SEBP-E1XF-50b	M50	1-1/2" or 2"	30 ~ 41.5	43 ~ 50	15	21 or 24	51	50	0.05/1.2	H68× 73	1390	100
SEBP-E1XF-63a	M63	2" or 2-1/2"	38 ~ 54	48 ~ 53	15	24 or 27	64	62	0.05/1.2	H82× 88	2070	108
SEBP-E1XF-63b	M63	2" or 2-1/2"	38 ~ 54	51 ~ 56	15	24 or 27	64	62	0.05/1.2	H82× 88	2070	108
SEBP-E1XF-63c	M63	2" or 2-1/2"	38 ~ 54	55 ~ 60	15	24 or 27	64	62	0.05/1.2	H82× 88	2070	108
SEBP-E1XF-75a	M75	2-1/2" or 3"	49 ~ 66	56 ~ 62	20	27 or 30	76	74	0.05/1.2	H98× 106	3270	125
SEBP-E1XF-75b	M75	2-1/2" or 3"	49 ~ 66	62.1 ~ 66	20	27 or 30	76	74	0.05/1.2	H98× 106	3270	125
SEBP-E1XF-75c	M75	2-1/2" or 3"	49 ~ 66	66.1 ~ 70	20	27 or 30	76	74	0.05/1.2	H98× 106	3270	125
SEBP-E1XF-75d	M75	2-1/2" or 3"	49 ~ 66	68 ~ 75	20	27 or 30	76	74	0.05/1.2	H98× 106	3270	125
SEBP-E1XF-90a	M90	3" or 3 1/2"	63 ~ 77	74 ~ 83	20	30 or 32	91	90	0.05/1.6	H110× 120	4600	132
SEBP-E1XF-90b	M90	3" or 3 1/2"	63 ~ 77	82 ~ 90	20	30 or 32	91	90	0.05/1.6	H110× 120	4600	132
SEBP-E1XF-100a	M100	3 1/2" or 4"	73.1 ~ 85	89 ~ 94	20	32	101	102	0.05/1.6	H120× 130	5500	144
SEBP-E1XF-100b	M100	3 1/2" or 4"	73.1 ~ 85	93 ~ 98	20	32	101	102	0.05/1.6	H120× 130	5500	144