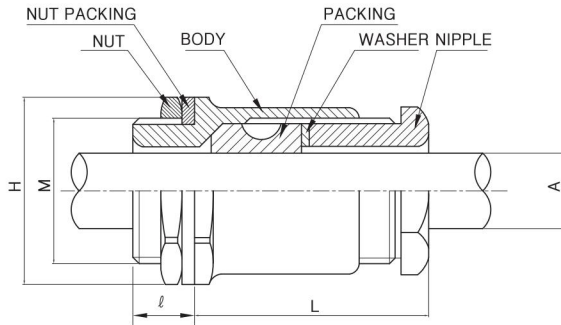


Non Armoured Cable Gland

A2F Non Armoured Cable Gland

Type of Explosion-Proof
Flameproof (Ex d IIC)



Standard Materials

- Body : Brass or Stainless Steel
- Finish : Natural or Nickel plated

Cable Gland Ordering

- Gland Type /Size & Entry Thread Size

Compliance & Certification

- Notification of Ministry of Labor No. 2010-36
- Certified by KOSHA
(Korea Occupational Safety & Health Agency)

Catalog No.	Entry Thread Size(M)		Cable Dia Outer 'B'	Thread Length(L)		Entry Hole Size		Hexagon Dimensions (H)	Weight (g)	Length (L)
	Metric	NPT		Metric	NPT	Metric	NPT			
SEBP-A2F-16a	M16 / M20	1/2"	3 ~ 7.5	15	15	17	22	H24 X 26	100	31
SEBP-A2F-16b	M16 / M20	1/2	6.1 ~ 10	15	15	17	22	H24 X 26	100	31
SEBP-A2F-20a	M20	1/2" or 3/4"	10.1 ~ 13	15	15 or 16	21	22	H27 X 29	230	33
SEBP-A2F-20b	M20	1/2" or 3/4"	13.1 ~ 15	15	15 or 16	21	22	H27 X 29	230	33
SEBP-A2F-25a	M25	3/4" or 1"	14 ~ 17.5	15	15 or 18	26	26	H32 X 34	320	34
SEBP-A2F-25b	M25	3/4" or 1"	16.1 ~ 19.5	15	16 or 18	26	26	H32 X 34	320	34
SEBP-A2F-32a	M32	1" or 1-1/4"	18.1 ~ 22	15	18 or 19	33	34	H39 X 41.5	370	38
SEBP-A2F-32b	M32	1" or 1-1/4"	21 ~ 26	15	18 or 19	33	34	H39 X 41.5	370	38
SEBP-A2F-40a	M40	1-1/4" or 1-1/2"	24 ~ 28	15	19 or 21	41	43	H48 X 51	550	40
SEBP-A2F-40b	M40	1-1/4" or 1-1/2"	27 ~ 32	15	19 or 24	41	43	H48 X 51	550	40
SEBP-A2F-50a	M50	1-1/2" or 2"	32.1 ~ 34	15	21 or 24	51	50	H58 X 62	690	42
SEBP-A2F-50b	M50	1-1/2" or 2"	34.1 ~ 40	15	21 or 24	51	50	H58 X 62	690	42
SEBP-A2F-63a	M63	2" or 2-1/2"	38 ~ 44	15	24 or 27	64	62	H73 X 78	1110	46
SEBP-A2F-63b	M63	2" or 2-1/2"	43 ~ 50	15	24 or 27	64	62	H73 X 78	1110	46
SEBP-A2F-63c	M63	2" or 2-1/2"	49 ~ 54	15	24 or 27	64	62	H73 X 78	1110	46
SEBP-A2F-75a	M75	2-1/2" or 3"	52 ~ 56	15	27 or 30	76	74	H85 X 90	1500	52
SEBP-A2F-75b	M75	2-1/2" or 3"	55 ~ 60	15	27 or 30	76	74	H85 X 90	1500	52
SEBP-A2F-75c	M75	2-1/2" or 3"	59 ~ 62	15	27 or 30	76	74	H85 X 90	1500	52
SEBP-A2F-75d	M75	2-1/2" or 3"	62.1 ~ 66	15	27 or 30	76	74	H85 X 90	1500	52
SEBP-A2F-90a	M90	3" or 3-1/2"	63 ~ 70	20	30 or 32	91	90	H103 X 113	2000	60
SEBP-A2F-90b	M90	3" or 3-1/2"	68 ~ 76	20	30 or 32	91	90	H103 X 113	2000	60
SEBP-A2F-100a	M100	3-1/2" or 4"	76.1 ~ 81	20	32	101	102	H112 X 120	2500	69
SEBP-A2F-100b	M100	3-1/2" or 4"	81.1 ~ 85	20	32	101	102	H112 X 120	2500	69